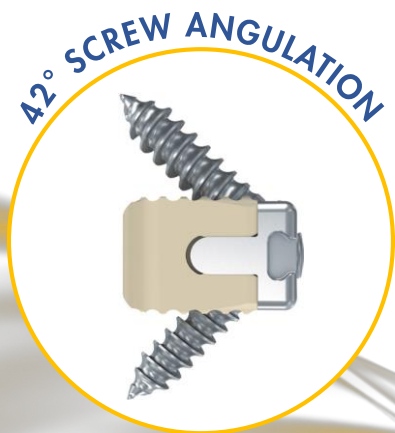
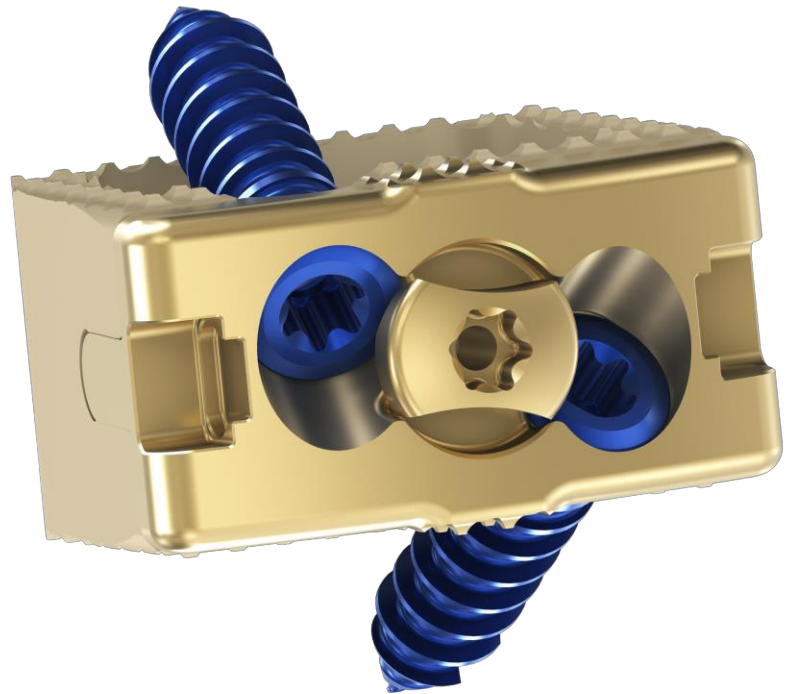


PRECISION SPINE
Vault[®] C
ACDF SYSTEM

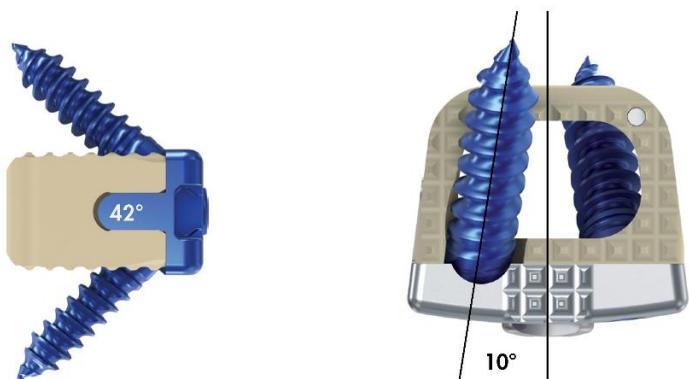


VAULT® C ACDF SYSTEM



Three Footprints available to accommodate varying anatomy. **Available Heights** range from 6-12mm in one mm increments. **Larger Graft Capacity** with the modular plate design.

Vault™ C Footprint W x D x H	Bone Graft Vault C	Volume (cc) Competitor A**	% Greater
14 x 12 x 6mm	0.32	0.27	19.00%
14 x 12 x 7mm	0.37	0.32	17.39%
14 x 12 x 8mm	0.42	0.36	16.17%
14 x 12 x 9mm	0.47	0.41	14.93%
14 x 12 x 10mm	0.52	0.46	14.21%
14 x 12 x 11mm	0.57	0.50	13.61%
14 x 12 x 12mm	0.62	0.55	12.89%

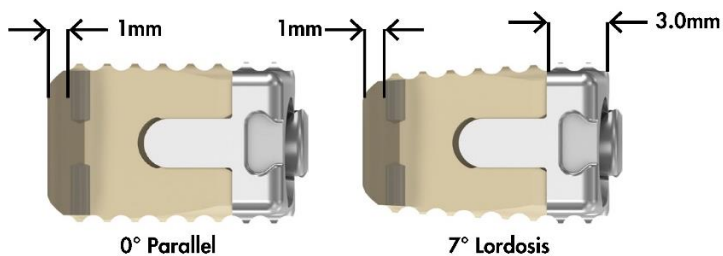


Maximum 42° Screw Trajectory with a nominal angle of 35° cephalad/caudal and 10° medial for optimal bone purchase and stability.

One Step Integrated Locking Cap provides easy, secure interlock.



Optional Open or Closed Drill Guides provide ideal visualization and control.



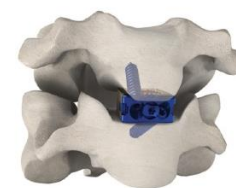
Two Lordotic Options 0° parallel or 7° lordosis. **Two Tantalum Markers** to easily identify landmarks on x-ray.

*PEEK-OPTIMA® polymer from INVIBIO®

**Data on file



Self-Tapping Screws In Two Options Self-Drilling and Blunt-Tip come in 3.5 or 4.0 diameter, and 12, 14, 15 and 17mm lengths.



Zero Profile Design